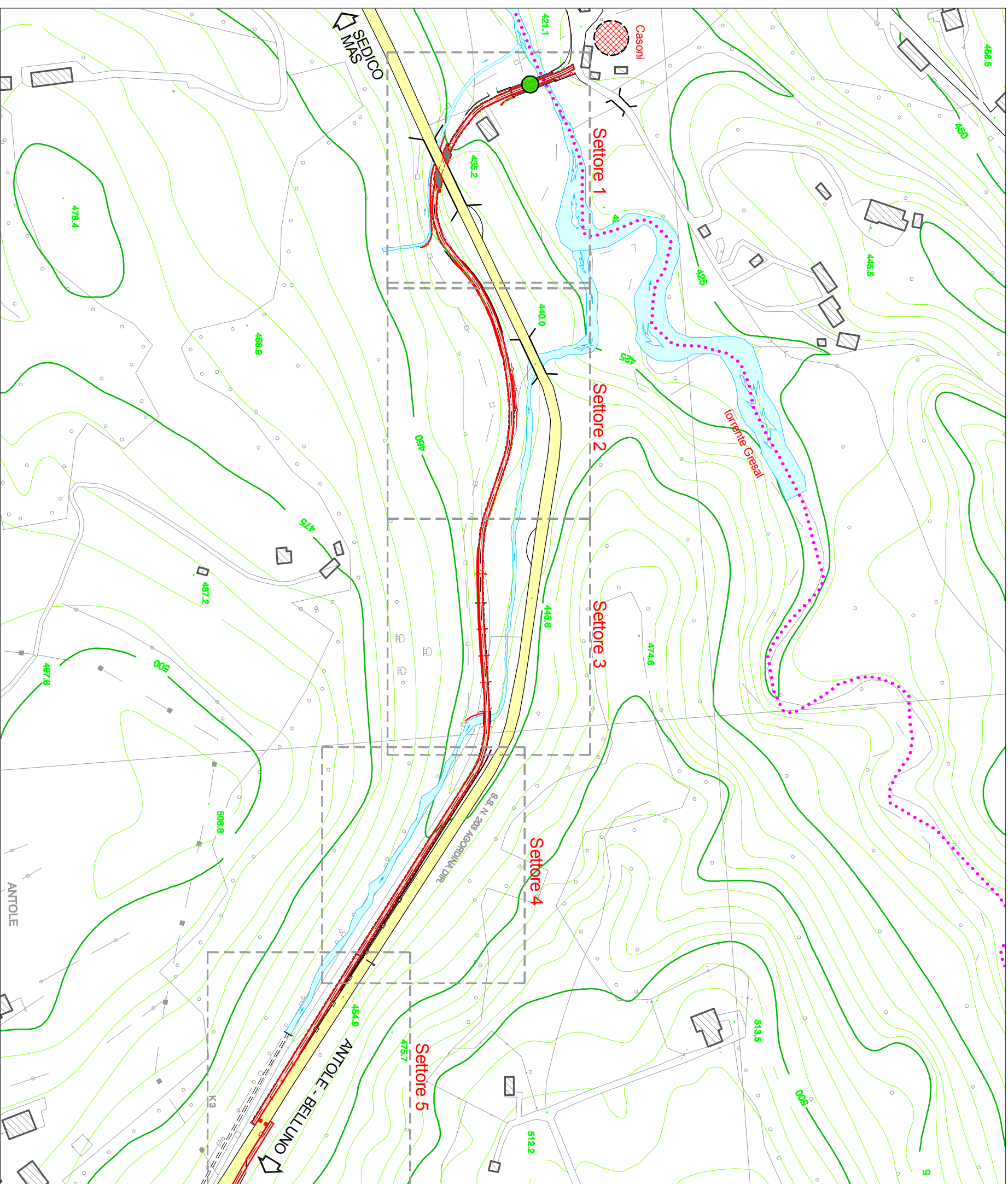


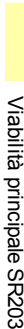
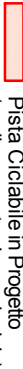



PLANIMETRIA DI RIFERIMENTO SU BASE CTR



- Legenda**
- ELEMENTI PRIORITARI**
-  Località Casoni
  -  Confine comunale Sedico/Belluno
- VIABILITA'**
-  Viabilità principale SR203
  -  Pista Ciclabile in Progetto (sedime ex strada provinciale)
- EMERGENZE ARCHITETTONICHE**
-  Ponte in pietra

scala 1:2500

